



INSTRUCTIONS D'ASSEMBLAGE
ASSEMBLY INSTRUCTIONS

MONARCH
SPECIALTIES INC.

I 1243

TABOURET DE BAR -
2PCS/ 46"H/ PIVOTANT/ SIMILI-CUIR GRIS

BARSTOOL -
2PCS / 46"H / GREY LEATHER-LOOK / SWIVEL

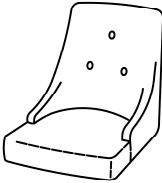

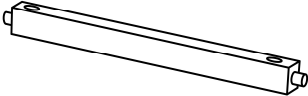
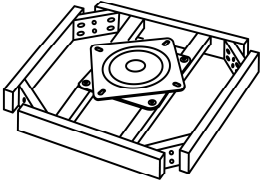


**POUR DE L'ASSISTANCE OU POUR COMMANDER
DES PIÈCES CONTACTEZ NOTRE DÉPARTEMENT
DE SERVICE À LA CLIENTÈLE.**

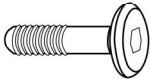
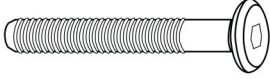
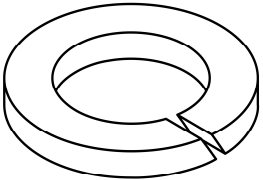
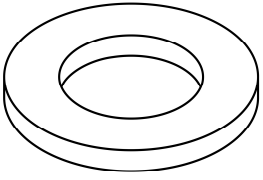
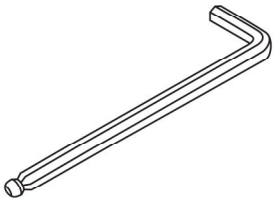
**FOR ASSISTANCE OR TO ORDER PARTS
CONTACT OUR CUSTOMER SERVICE DEPARTMENT**

WWW.MONARCHSERVICE.COM

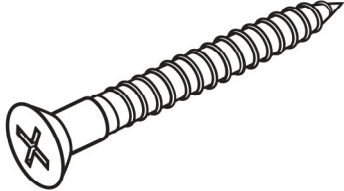
LISTE DES PIÈCES
PARTS LIST

PIÈCE / PART #	IMAGE	DESCRIPTION	QTY / QTÉ
1		<p>SEAT CUSHION COUSSIN DU SIÈGE</p>	2
2		<p>CHAIR LEG PATTE DE CHAISE</p>	8
3		<p>STRETCHER CHÂSSIS</p>	8
4		<p>SWIVEL PLATE PLAQUE TOURNANTE</p>	2

LISTE DES PIÈCES DE MONTAGE
HARDWARE LIST

PIÈCE / PART #	IMAGE	DESCRIPTION	QTY / QTÉ
A		<p>ASSEMBLING BOLT - Ø 1/4" X 1"</p> <p>BOULON D'ASSEMBLAGE - Ø 1/4" X 1"</p>	8
B		<p>ASSEMBLING BOLT - Ø 1/4" X 2"</p> <p>BOULON D'ASSEMBLAGE - Ø 1/4" X 2"</p>	16
C		<p>LOCK WASHER - Ø 1/4" X 1/2"</p> <p>ENTRETOISE DE MÉTAL - Ø 1/4" X 1/2"</p>	16
D		<p>METAL WASHER - Ø 1/4" X 5/8"</p> <p>RONDELLE DE MÉTAL - Ø 1/4" X 5/8"</p>	16
E		<p>HEX KEY</p> <p>CLÉ HEXAGONALE</p>	2

LISTE DES PIÈCES DE MONTAGE
HARDWARE LIST

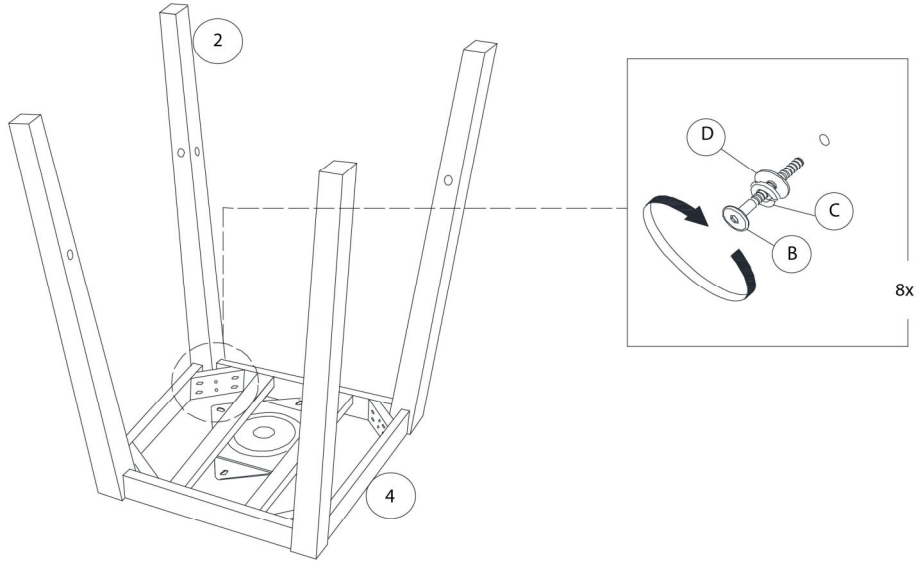
PIÈCE / PART #	IMAGE	DESCRIPTION	QTY / QTÉ
F		ASSEMBLING SCREW - Ø 1/8" X 1 1/2" VIS D'ASSEMBLAGE - Ø 1/8" X 1 1/2"	16



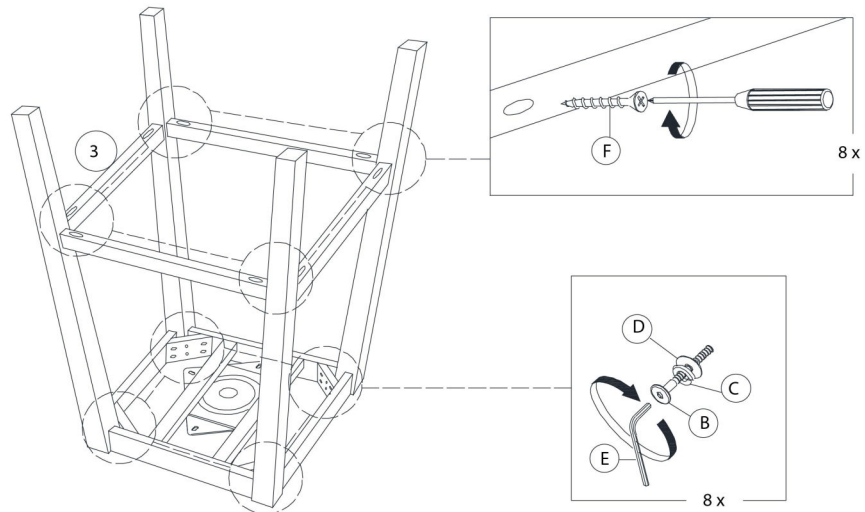
OUTIL DE VÉRIFICATION DE DIMENSIONS DES PIÈCES
HARDWARE DIMENSIONS VERIFICATION TOOL



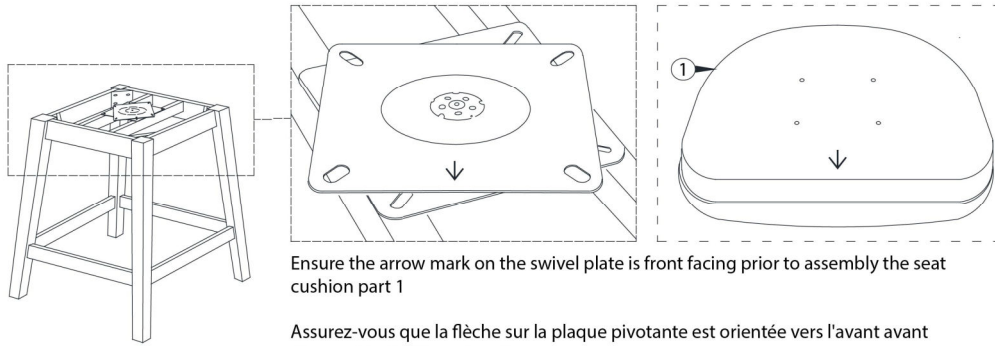
ÉTAPE / STEP 1



ÉTAPE / STEP 2



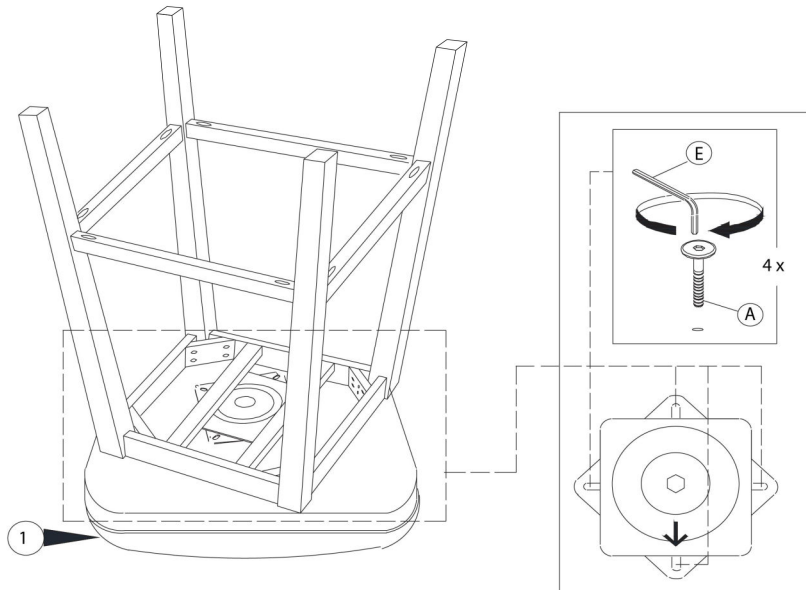
ÉTAPE / STEP 3



Ensure the arrow mark on the swivel plate is front facing prior to assembly the seat cushion part 1

Assurez-vous que la flèche sur la plaque pivotante est orientée vers l'avant avant d'assembler le siège piece 1

ÉTAPE / STEP 4



ÉTAPE / STEP 5

